

Aficio[®] 1105

The **Power** to Produce ...
On Demand Imaging System



RICOH[®]

Aficio®

Streamlining Heavy
Workflow & Supporting
Tight Deadlines With
Advanced, High-Powered,
Connected RICOH Digital
Imaging Productivity.

THINK

FAST



1105

The **DIGITAL** DIFFERENCE



**VARIETY OF
FRONT END
SOLUTIONS**



**ACCURATE
QUALITY
OUTPUT**



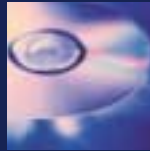
**SPEED IN
PRODUCTIVITY**



**TOUCH OF A
BUTTON FOR
COMPLEX JOBS**



**HOLE PUNCH
CAPABILITIES**



**VERSATILE
DOCUMENT
SERVER**

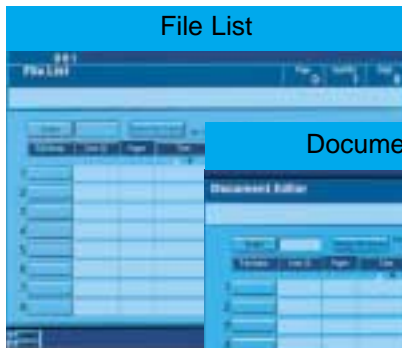


**PROFESSIONAL
FINISHING**

SMART

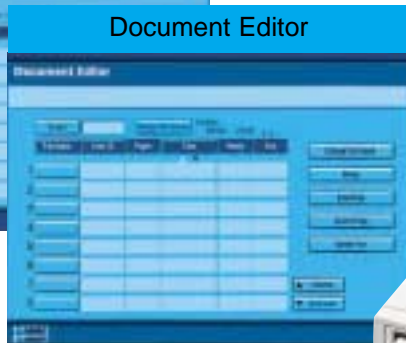
The bottom line is, with extreme high-volume workloads and high-end print production demands, time is money ... and you can't afford to lose either. That's where the incredibly productive RICOH® Aficio® 1105 Digital Imaging System comes in. As a digital technology leader, we know that to keep up with and stay on top of your business, you need a super-productive, high-performance solution that gives you:

- Power to blaze through massive copy/print jobs
- Top performance that ensures production image quality and continuous reliability
- Advanced, versatile functionality for on-demand print production and network connectivity



File List

Document Server allows you to locate searchable files.



Document Editor

Document Editor allows you to retrieve and edit files.

Intelligent Document Server & Editor Technology Heightens Versatility

The innovative Document Server & Editor opens up a world of flexibility to users when it comes to handling both paper-based and electronic originals in a variety of applications. With the Aficio 1105 producing even complex, multi-section documents is a snap.

Storing up to 250 jobs, the Document Server links all electronically created as well as paper-based originals scanned into memory, and lets you locate any of these searchable files by document File Name, User ID or Time for easy storage and access. The Document Editor steps in to allow users to retrieve and edit files for a suite of diverse solutions that dramatically increase printing productivity.

Sample Set/Proof Printing - Enables users to verify and/or change settings for a particular document before printing the entire job, significantly reducing paper waste.



CD-R/W drive stores and retrieves large files for Print-on-Demand applications.

Print-on-Demand - Produce only the output you need, eliminate excess warehousing or stocking costs. Useful for extensive documents like sales, training and service manuals, which require ongoing changes and modifications. The Aficio 1105's Print-on-Demand system provides an optional CD-R/W drive to store and retrieve such large files.

Secure Printing - Confidential documents are protected by an assigned password, then held in memory until retrieved by an authorized party.

File Merge Printing - Efficiently merges files and permits the easy assembly of complex documents from various applications.



CONNECTED

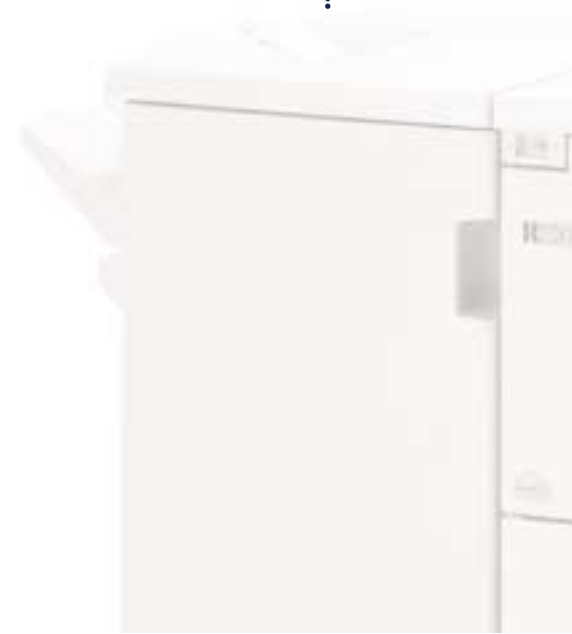
Designed for document production, the Ricoh Aficio 1105 offers a variety of front end solutions to meet your high volume workload and production print demands. Choose from the Ricoh Type 850 print controller, the Fiery EB-105e controller or the Ricoh MicroPress to handle your document management needs. The Ricoh Aficio 1105 partners with your choice of front end solutions to manage your production demands.



Fiery EB-105e Print Controller



Adobe® PostScript® 3™





Type 850 Print Controller



MicroPress Document Production System



PRODUCTIVITY

Digital Technology Means Ease-of-Use, Smooth Operation

Life in high production land gets even easier with the impressive **72-original-per-minute digital scanner**, integral to the Aficio 1105's amazing performance and one of the fastest in the world. A productive **100-sheet Automatic Reversing Document Feeder** lets you batch feed more than 100 originals at a time.

Scan Once, Print Many allows you to scan documents once directly into the Aficio 1105's powerful memory then let the system pump out the volume.

Complicated jobs are further simplified with the Aficio 1105's flexibility to handle virtually any type assignment. It's easy to select **covers, tabs, chapters and more** – just press a button to start the job, and it's done.

Shown is the Aficio 1105 Touch Panel Display.



While its digital imaging capabilities are quite advanced, the Ricoh Aficio 1105 system's **user-friendly color touch panel display** is quite simple. You can clearly and easily program any job for effort-free, worry-free operation. The enhanced, dual-language display further simplifies matters by showing users only the information needed for the task at hand.

Diverse Capabilities and Professional Finishing That Set Your Work Apart

At the time of printing, the Aficio 1105 will automatically **place the date and number the pages of a document.**

This allows you to create a new document consisting of existing materials from a variety of sources – hard copies, electronic files, etc. – without the need for manual date stamping and numbering. For greater security, choose to have the Aficio 1105 number each set it prints with an identifying **background number.** Also, select from a range of **preset stamps** – Copy, Urgent, Draft, Confidential and more – to label specific document types, or create your own stamps for custom applications.

Virtually Limitless Supplies, Maximize Uptime

Built to think ahead so you don't have to, the Aficio 1105 has **two toner bottles on board** for change-on-the-fly replenishment, so continual uptime is always ensured. And with the system's standard yet plentiful **7,550-sheet** paper capacity, you're guaranteed ongoing, uninterrupted production run after run. The system is comprised of Ricoh's unique Tandem Tray, plus two 500-sheet universal trays and three (8 1/2" x 11") trays for 20 lb. or heavier paper stock – including 90 lb. and 110 lb. index stock, 80 lb. cover stock and up to 12-bank tab stock.



Connect Copy/Connect Print Makes Extra Speed More Affordable

Imagine the power and productivity you're afforded when two Aficio 1105s are teamed together! Linking two systems with **Connect Copy/Connect Print** will not only effectively double output, but also achieve phenomenal speeds of up to **210 pages-per-minute!** Plus, your operation always has a back-up unit for standard "walk-up" applications when you need it. Connect Print lets users send documents right from their desktop to the Document Server where they can split the job between two Aficios to maximize output.



Ricoh's top-of-the-line Aficio 1105 Digital Imaging System affordably arms any Print-For-Pay operation, Central Reprographics Department (CRD), or other high-volume, high-output environment with cutting-edge ammunition to rip through jobs at a remarkable 105 ppm running speed!

The Powerful Ricoh Aficio 1105. High-Speed, High-Output, Production Quality Printing and Finishing For Today's Most Demanding Networked Production Environments.

Finishing Solutions and Bookletmaking Options

Add the finishing touches to appropriate documents with versatile stapling and hole-punching capabilities. **Staples sets up to 100 pages (SR810 finisher) in one of four staple positions**, then automatically trims the staples to the correct length. The finisher unit's advanced design enables no-delay stapling at the same speed as copying or printing! Using the super time-saving integrated **3-hole or 2-hole punch option**, a must for certain industries, the Ricoh Aficio 1105 can be programmed for on-line hole punching as part of a job, rather than a separate operation.

folded and stapled booklets. And to increase your productivity, the SR85 can be easily rolled off-line and used as a stand-alone Bookletmaker, while the Aficio 1105 is producing other jobs.

SPF-9R Bookletmaker

Turn your business into high gear by partnering the SPF-9R Bookletmaker and the Aficio 1105! Just connect the

the standard trimmer, the face or lead edge will be perfectly trimmed, eliminating the uneven edges that typically occur when multiple sheets are folded. And for a professional finish, you can use the cover feeder to produce color covers.

SPF-9R Bookletmaker



SR85 Bookletmaker

Outputting professionally finished booklets has never been easier. With the SR85 Bookletmaker connected to the Aficio 1105, you have a true production powerhouse that lets you create multiple sets of professionally

SR85 Bookletmaker to the system and you'll enjoy virtually endless on-line processing of multiple document sets, as well as the most professional, accurate output. All your booklets will come out precisely folded and neatly stapled ... ready for distribution. Plus, with

Partners With the Environment



Ricoh, named the EPA 2000 Office Products Partner of the Year, has been recognized for five consecutive years by the U.S. Government for its continued commitment to a healthier, safer environment.

SR85 Bookletmaker



THINK RICOH



RICOH®



Five Dedrick Place
West Caldwell, NJ 07006
Phone: (973) 882-2000
Website: <http://www.ricoh-usa.com>

Ricoh is a registered trademark of Ricoh Company, Ltd.

All other trademarks are the property of their respective owners.
© Ricoh Corporation

Specifications and external appearance are subject to change
without notice.

Ricoh Consumables. For maximum performance and yield,
we recommend using genuine Ricoh parts and supplies.

Aficio®

1105

Aficio 1105 Digital Speed, Productivity & Versatility

The durable RICOH® Aficio® 1105 gives you all the high-performance benefits of advanced, integrated digital imaging, at a fast 105-pages-per-minute, along with exceptional production image quality. Thanks to its state-of-the-art capabilities, superior performance and productivity are always right at hand for the most intensive production environments.

The Aficio 1105's convenient "Scan Once, Print Many" technology enables you to scan documents directly into the system's powerful memory. Other workflow-enhancing capabilities include an efficient 100-sheet Automatic Reversing Document Feeder, and a high-capacity 3,000-sheet, four-position Stapler/Finisher, capable of stapling up to 100 sheets per set.

Whether producing multi-page sets or complex tabbed, hole-punched documents, and whether jobs are operated from the system or from networked PCs, the high-volume Aficio 1105 delivers top quality output in superb time – all professionally finished and ready to distribute. Its advanced capabilities are simplified with a color touch screen display, which guides users through each operation and shows only the information necessary for the specified task.

Pre-programmed shortcut keys make performing many common tasks a one-touch proposition, so all jobs run swiftly. Effortlessly select cover stock, tabs, chapters and more, then walk away with your originals. Production is completed automatically while you tend to other business or process other jobs. Add to the mix the ability to produce your output finished with integrated 3-hole or 2-hole punch, stamping and numbering, stapling, sample set proofing, and so much more.

Dual toner bottles on-line allow for change-on-the-fly, so output performance remains continuous and uninterrupted. Document processing is further streamlined with the system's abundant total 7,550-sheet paper capacity, which includes one tandem tray (up to 2,000 sheets of 8 1/2" x 11"), two 500-sheet universal trays (up to 11" x 17") and the Large Capacity Tray offering three additional 8 1/2" x 11" trays. Add paper to any tray not in use, plus enjoy the convenience of Auto Tray Switching – where the system automatically shifts to a tray containing the same paper type while seamlessly continuing the job run.

Reap the rewards of the remarkable yet affordable digital technology incorporated in the Aficio 1105 – the right high-speed, high-output system for your extreme workload.



General Specifications

Printing Process:	Dry Process (Dual Component)
Reading Element:	4 Channel CCD Array
Configuration:	Console
Standard Memory:	48 MB x 2 (RAM)/10.2 GB x 2 (HDD)
Warm Up Time:	6 minutes
Quantity Indicator:	1 to 9,999
Power Source:	220/240V/60Hz/20A
Full System Dimensions: (WxDxH)	87.3" x 28.9" x 58.1"
Weight:	864.9 lbs.

Engine Specifications

Speed

First Copy:	3.8 seconds
Copying Speed:	105 copies/minute
Copy Resolution:	600 x 600 dpi
Gray Scale:	256 levels

Original/Copy Size

Original Type:	Book/Sheet
Original Size:	Up to 11" x 17"
Copy Size:	5 1/2" x 8 1/2" to 11" x 17"
Copy Type:	Plain Paper, Transparencies, Tabs, 90 lb. & 110 lb. Index, 80 lb. Cover

Duplex

Type:	Four Page Stackless Interleave
Capacity:	Unlimited
Paper Size:	5 1/2" x 8 1/2" to 11" x 17"
Paper Weight:	20 lb. Bond – 90 lb. Index

Document Server Specifications

Number of Jobs:	Up to 250
Number of Pages:	Up to 5,000
Resolution:	600 dpi, 4 level (Scanning Data) 600 dpi binary (Electronic Data)
User ID:	Max 8 letters (Alphanumeric)
File Name:	Max 8 letters (Alphanumeric)
Password:	Max 4 digits (Numeric)

Accessories

CD-R/RW Drive Type 850

Functionality:	Write and read Aficio 1105 document file data from CD-R or CD-RW disk
Disk Memory:	50 files or 500 pages
Speed:	Write – 4x Read – 20x
Power:	120V/60Hz/15A
Dimensions (WxDxH):	5.8" x 7.8" x 1.7"
Weight:	3.3 lbs.

Connect Copy Kit Type 850

Interface PCB Board Type 850

11" x 17" Tray Kit Type 850

Punch Kit Type 850 NA-3 (3-Hole)


Punch Kit Type 850 NA-2 (2-Hole)

SR85 Bookletmaker

SPF-9R Bookletmaker

Ricoh Consumables. For maximum performance and yield, we recommend using genuine RICOH parts and supplies.

Specifications and external appearances are subject to change without notice.

 Printed in U.S.A. on recycled paper because Ricoh cares.

Ricoh is a registered trademark of Ricoh Company, Ltd.
All other trademarks are the property of their respective owners. © Ricoh Corporation.

Paper Supply

Paper Feed:	1st Tray - 1,000 sheets x 2 (Tandem Tray) 2nd and 3rd Tray - 500 sheets (User Adjustable)
Paper Size:	5 1/2" x 8 1/2" to 11" x 17"
Paper Weight:	14 lb. Bond – 90 lb. Index

RT42 Large Capacity Tray

Paper Size:	5 1/2" x 8 1/2" to 8 1/2" x 11"
Paper Capacity:	4th and 5th Tray – 1,000 sheets; 6th Tray – 2,550 sheets
Paper Weight:	14 lb. Bond – 80 lb. Cover (4th and 5th Tray) 14 lb. Bond – 90 lb. Index (6th Tray)
Total Capacity:	7,550 sheets

Reduction/Enlargement

Reproduction Ratios:	25%, 50%, 65%, 73%, 78%, 85%, 93%, 121%, 129%, 155%, 200%, 400%
Zoom:	25% - 400% in 1% increments

Auto Reversing Document Feeder

Original Size:	5 1/2" x 8 1/2" to 11" x 17"
Original Weight:	13 lb. Bond – 90 lb. Index (Simplex) 16 lb. – 34 lb. Bond (Duplex)
Original Stack Capacity:	100 sheets (20 lb. Bond)
Scan Speed:	72 OPM

SR810 Finisher

Shift Tray Stack Capacity:	3,000 sheets
Proof Tray Stack Capacity:	500 sheets
Paper Weight:	14 lb. Bond – 80 lb. Cover
Staple Capacity:	100 sheets (20 lb. Bond)
Staple Paper Size:	8 1/2" x 11" to 11" x 17"
Staple Position:	4 Positions (Top, Bottom, 2 Staples, Top Slant)

Aficio® 1105

Copier Features

Auto Duplex	Original Modes:
Auto Off	Generation Copy,
Auto Paper Select	Pale Original, Photo
Auto Reduce/Enlarge	Text, Text/Photo
Auto Stamping	Original Orientation Mode
Auto Start	Page Numbering
Auto Tray Switching	Paper Designate (20)
Background Numbering	Print Sample
Batch Mode	Repeat Copy
Booklet/Magazine Mode	Rotate Original
Centering	Sample Set
Chapterization (20)	Save/Delete
Combine Originals	Series Copying
Covers (2, 4, 8, 16)	Size Magnification
Directional	Slip Sheets
Magnification (%)	(OHP, Separation)
Directional Size	Special Paper Display
Magnification (Inch)	Tab Copy
Double Copy	Tandem Print (Option)
Energy Saver Mode	Thin Paper Mode
Erase Center/Border	Three Side Full Bleed
Image Repeat	Touch Panel Display
Image Shift	(Dual Language)
Interrupt	User Codes:
Job Preset (10)	500 Copy/500 Print
Job Program (25)	User Stamping
Job Status Indicator	Weekly Timer
Job Time Calculation	
Margin Adjustment	
Mixed Size Originals	

Document Server Features

Booklet and Magazine Mode	Save Printing Conditions
Change File Name	Search by Document File Name
Connect Copy/Print	Set Password
Job Preset (10 Jobs)	Sort By User ID or Time
Sample Set	

Document Editor Features

Change File Name	File Insertion
Delete File	File Merge
Delete Page	File Save to CD
File Download from CD	Insert Page



EPA 2000 Office Products Partner of the Year (5th consecutive year)
EPA 2000 Labeling Partner of the Year
Ricoh Corporation has determined that this product meets
the Energy Star® guidelines for energy efficiency.



RICOH®
Image Communication

Ricoh Corporation, Five Dedrick Place, West Caldwell, NJ 07006
Phone: (973) 882-2000 Website: <http://www.ricoh-usa.com>
CA-0133C

FIERY EB-105e CONTROLLER CAPABILITIES & SPECIFICATIONS

Aficio®

1105

Aficio 1105 Fiery® EB-105e Embedded Print Controller Assures Image Quality & Flexibility

Increased productivity is the result when the Fiery EB-105e teams up with the RICOH® Aficio 1105. Designed to support the most demanding Print-for-Pay and Production environments, the EB-105e delivers smooth, consistent black and white printing with astonishing speed.

The Fiery EB-105e is designed for ease-of-use and includes document building tools, print drivers for a variety of platforms, utilities for remote job management, and a local interface for immediate control on the Fiery.

Speed For Productivity Fiery EB-105e provides document printing capability with Rip-While-Print and Continuous Print technologies optimized for black and white business applications. Drives the Aficio 1105 at its rated speeds and offers users full control of advanced paper-handling features including sorting, stapling, hole punching, cover stock and tab extension printing.

Boasting the powerful Fiery architecture, effortless networking, and remarkable ease of use, the Fiery EB-105e commands productivity for large workgroups as well as intense production environments.

Fiery Netwise 2.0™ networking architecture allows for a simple setup in any network environment. Auto-switching protocols, auto-sensing ports and support of standard 10/100BaseT connections make Netwise 2.0 the most universal Novell NDS Compliant network architecture.

Fiery Downloader Users can download Postscript EPS, PCL and PDF files, as well as manage fonts. Users can modify settings or edit the number of required copies without opening application programs.

Fiery FreeForm™ offers fast, easy variable data printing with features not available elsewhere, such as mixing applications and platforms, RIPing the master page once, and creating unlimited variable elements.

Fiery WebTools™ Fiery WebTools provide a complete set of platform independent remote printer management utilities that allow print jobs to be managed remotely over corporate intranets or the Internet with a Java enabled web browser. Through WebSpooler, the user may view the printer status as well as track each print job as it is being Spooled, RIPed or Printed.

DocBuilder Pro™ (optional) represents the industry's first server-based imposition application. After converting source documents to PDF files, DocBuilder Pro allows entire documents to be previewed, edited and assembled before RIPing.

Command WorkStation™ (optional) allows users to track, manage, and control print jobs from a centralized location, ensuring the highest production for print-for-pay and corporate reproduction departments.

RICOH®

Fiery EB-105e Controller Specifications

Hardware

Fiery X2e Motherboard:

- MIPS R7000 @266 MHz CPU
- 64 MB RAM (standard) 64 RAM (optional)
- SDRAM enabling fast memory access
- High speed 64-bit bus
- 6 GB Hard Disk

Networking - Netwise 2

Simultaneous auto-switching protocols:

- EtherTalk
- TCP/IP
- Novel IPX 802.2, 802.3, 802.5
- Ethernet II, and SNAP frame types

Auto-sensing ports:

- RJ45
- Parallel port (in) IEEE 1284, Type C
- Ethernet 10/100 BaseT standard support

EFI Custom ASICs

- IX ASIC – Increased speed of I/O functions
- DX ASIC – High speed and access of various memory types and speeds
- VX2b ASIC – High speed Video Interface

Page Description Language/Fonts

- Adobe PostScript3
- 136 Adobe Roman PostScript
- PCL5e and PCL6
- PDF printing

Controller Options

- Command WorkStation™
- DocBuilder Pro™
- 64 MB RAM

Resolution

- 600 X 600 dpi

Utilities

- Fiery FreeForm
- Fiery WebTools™
- WebSetup™
- Configure
- Print Status
- Web Spooler™
- Fiery Downloader™
- Fiery Print Drivers for Macintosh and Windows

Regulatory Approvals

- CSA
- TUV/GS
- UL
- EMC
- CE Mark
- EN55022 Class B
- FCC Class B
- VCCI Class A

Aficio® 1105



Adobe® PostScript® 3™



EPA 2000 Office Products Partner of the Year (5th consecutive year)
EPA 2000 Labeling Partner of the Year
Ricoh Corporation has determined that this product meets
the Energy Star® guidelines for energy efficiency.

OFFICIAL PRINTER,
COPIER AND FAX
OF THE PGA OF AMERICA



Specifications and external appearances are subject to change without notice.

Printed in U.S.A. on recycled paper because Ricoh cares.

Ricoh is a registered trademark of Ricoh Company, Ltd.
All other trademarks are the property of their respective owners. © Ricoh Corporation.

RICOH®

Image Communication

Ricoh Corporation, Five Dedrick Place, West Caldwell, NJ 07006
Phone: (973) 882-2000 Website: <http://www.ricoh-usa.com>
CA-0133E

TYPE 850 PRINT CONTROLLER CAPABILITIES & SPECIFICATIONS

Aficio®

1105

Aficio 1105 Type 850 Print Controller Networked Power For Ultimate Print Production

Precision, high-speed 105 ppm laser printing is yours when you choose the optional RICOH® Type 850 print controller. You'll benefit from the productive advantage of a reliable, fully-networked digital laser printer, plus exceptional 600 dpi production image quality that delivers pristine, professional-quality documents repeatedly. Heavy volume print production environments like yours know how important fast speed, high volume, quality and flexibility are – that's why you'll truly appreciate this affordable, time-saving, profit-building business solution.

You can conveniently control all the Aficio 1105's advanced capabilities right from the desktop.

The Aficio 1105's intelligent Document Server & Editor technology takes productivity further by providing networked output solutions that go way beyond any

traditional printer. Innovative print productivity-enhancing features include:

Print-on-Demand – Store files with their job settings at the Document Server for easy retrieval whenever the file is needed for printing.

File Merge/Delete – Conveniently merge electronic and/or paper-based originals to create a brand new file. You can delete or add files as necessary.

Proof Printing – Print a sample set for approval before proceeding to print a large job, preventing waste.

Secure Printing – Send electronic documents with a password to ensure security.

The Type 850 Print Controller enables powerful network connectivity in the widest range of environments, so all your jobs are seamlessly processed. PCL6/PC5e is standard, allowing the system to work with all major PC applications, and PCL drivers are available for Windows

95/98/2000 and NT 4.0. An optional Adobe® PostScript®3™ module offers drivers for all the above applications, plus the latest Macintosh OS.

Moreover, the Aficio 1105's incredible performance is enhanced through the Ricoh Aficio Manager utility software.

In today's networked office, proactive management of the document workflow on your network is essential. Aficio Manager places at your disposal a dynamic suite of utility software that simplifies all aspects of installation, monitoring and management of Ricoh Aficio network output systems.

RICOH®

Type 850 Print Controller Specifications

Print Speed:	105 ppm
Interface:	Ethernet Network Interface Card 10/100BaseT Parallel Port (IEEE 1284)
CPU:	Power PC 740/266 MHz
Network Protocol:	TCP/IP, IPX/SPX, AppleTalk
Memory Capacity:	32 MB Standard (Expandable to 256 MB)
Hard Disk Drive:	6 GB (Optional)
Printer Language:	PCL5e/PCL6 (Standard) Adobe PostScript3 (Optional)
Print Drivers:	PCL5e/PCL6 for Windows 95, 98, 2000, NT 4.0; Adobe PostScript for Windows 95, 98, 2000, NT 4.0; Macintosh
Print Resolution:	PCL6/600 dpi (2400 dpi x 600 dpi with edge smoothing) PCL5e/600/300 dpi Adobe PostScript3/600 dpi
Fonts:	Standard: 35 Intellifonts, 10 True Type Fonts, 1 Bitmap Optional: 136 PostScript Fonts

Controller Options

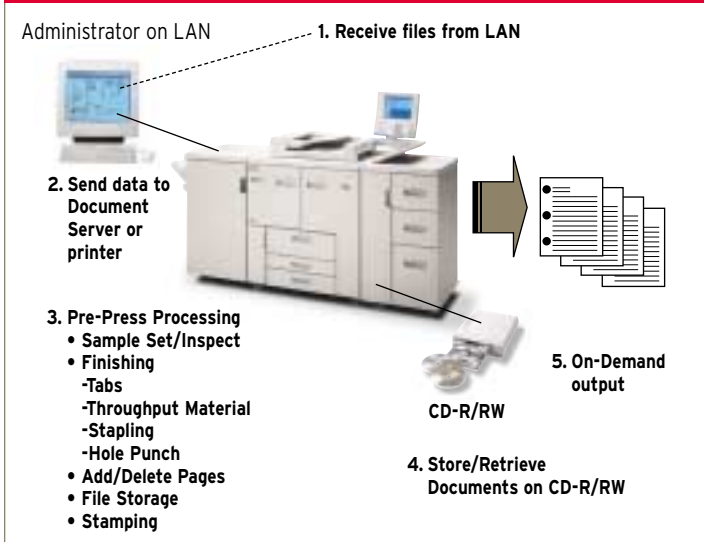
Adobe® PostScript®3™ Type 850
Printer Hard Disk Drive Type 850
Network Interface Board Type 450-E
Type 850 Interface PCB
Type 850 32MB Printer Memory
Type 850 64MB Printer Memory
Type 850 128MB Printer Memory

Aficio® 1105

Printer Features

Binding (Top & Side)	Punch/3 or 2 hole (top or left)
Collation	
Cover Sheet Printing	Sample Print
Document Server	Secure Print
Duplex Printing	Separator Page (with PostScript3 only)
Layout (up to 16 pages per sheet)	Special Stock (Thick, Transparency)
Magazine Mode	Stapling
OHP Slip Sheet Printing	Tray Lock
Proof Printing	

Production/On-Demand



Ricoh Consumables. For maximum performance and yield, we recommend using genuine RICOH parts and supplies.

Specifications and external appearances are subject to change without notice.

Printed in U.S.A. on recycled paper because Ricoh cares.

Ricoh is a registered trademark of Ricoh Company, Ltd.
All other trademarks are the property of their respective owners. © Ricoh Corporation.



Adobe PostScript® 3™



EPA 2000 Office Products Partner of the Year (5th consecutive year)
EPA 2000 Labeling Partner of the Year
Ricoh Corporation has determined that this product meets the Energy Star® guidelines for energy efficiency.

OFFICIAL PRINTER,
COPIER AND FAX
OF THE PGA OF AMERICA



RICOH®
Image Communication

Ricoh Corporation, Five Dedrick Place, West Caldwell, NJ 07006
Phone: (973) 882-2000 Website: <http://www.ricoh-usa.com>
CA-0133P